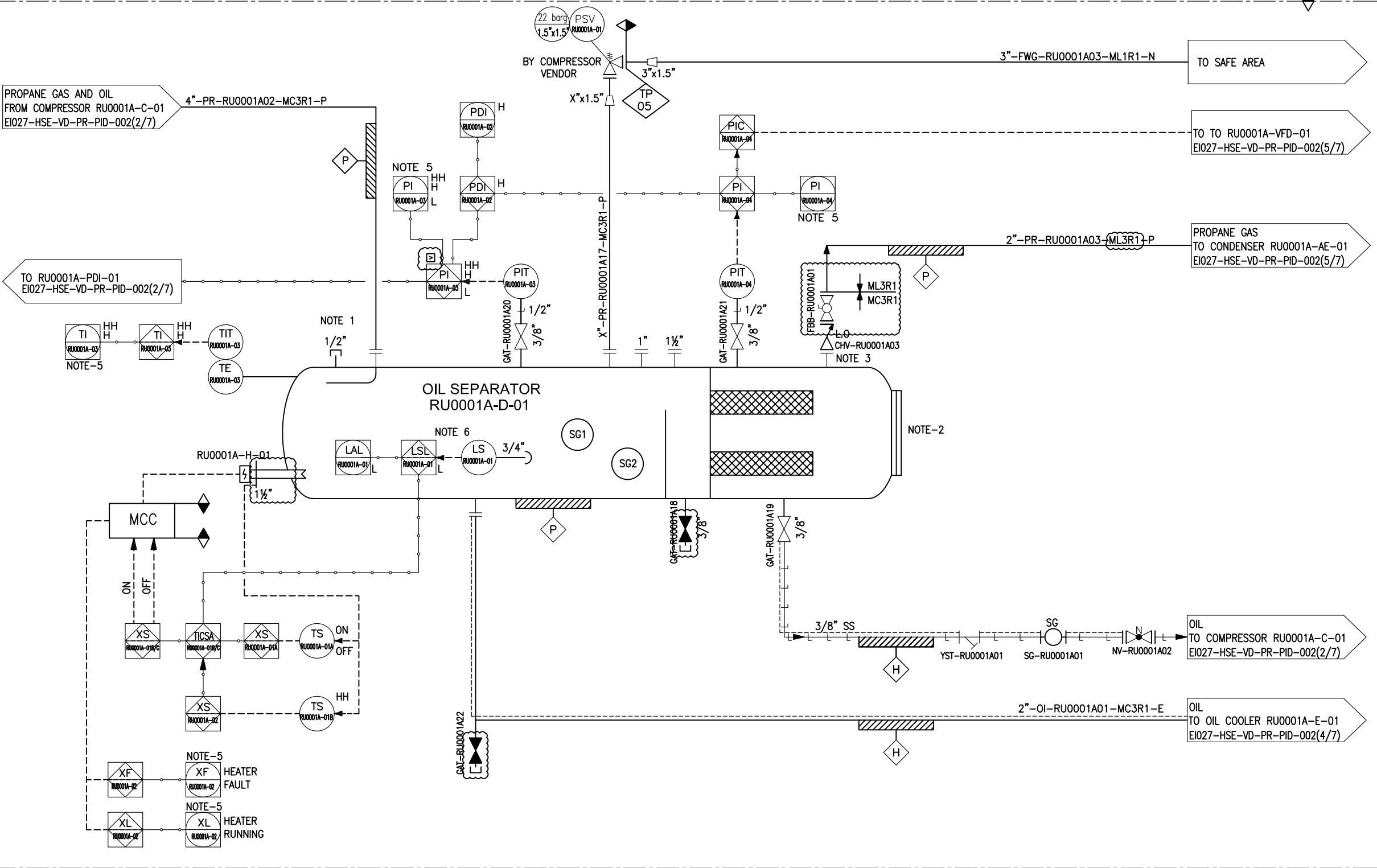


TAG NO.	RU0001A-D-01
SERVICE	OIL SEPARATOR
DESIGN PRESS. (BARG)	22
DESIGN TEMP. (°C)	-29/100
ID x L (mm)	590 x 2250



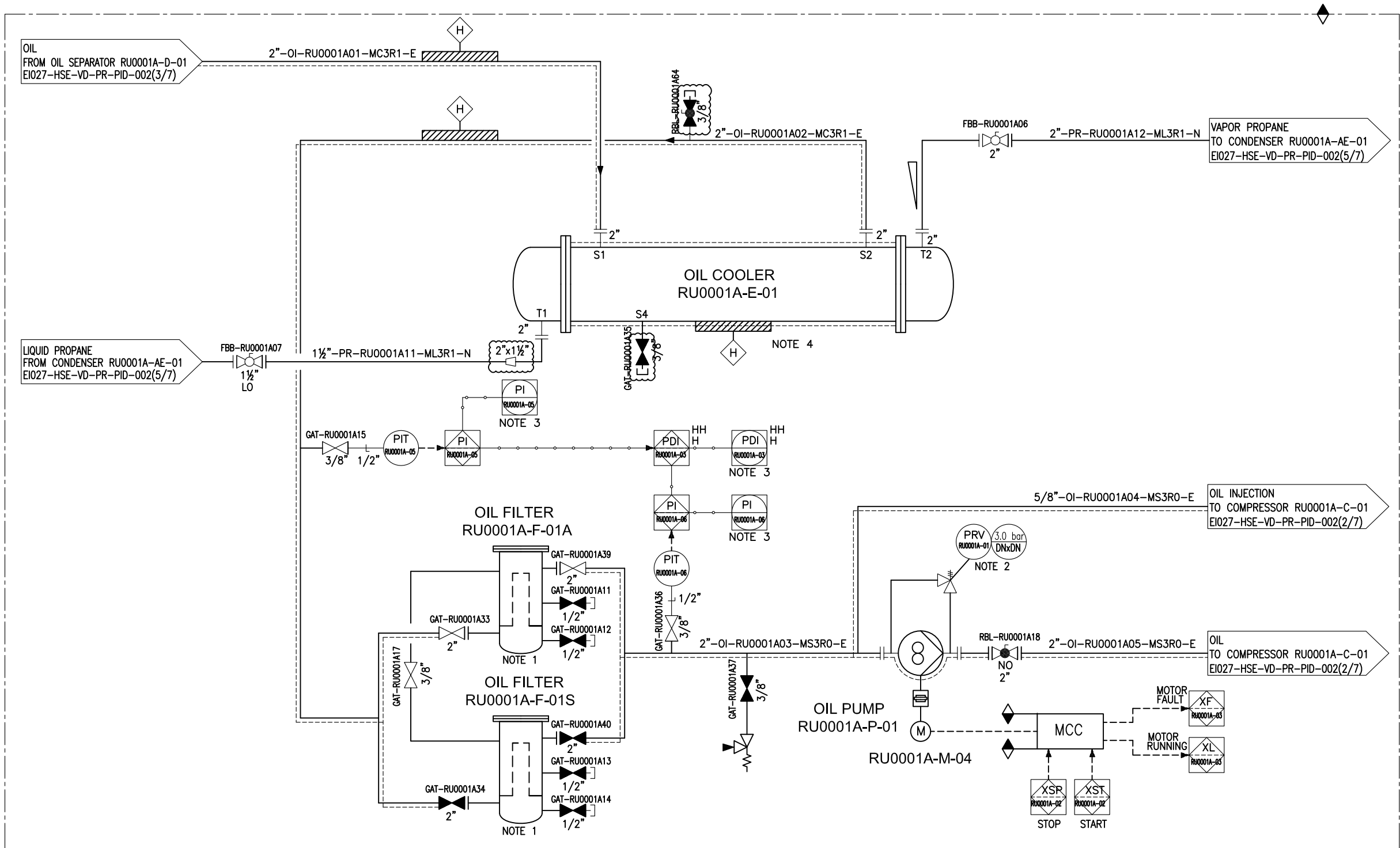
REFERENCE DRAWING	DWG NO.	REV.			
NOTES :					
1- OIL TOP UP & VACUUM CONNECTION.					
2- INSPECTION HOLE.					
3- STOP CHECK VALVE FOR PREVENT SPIN BACK.					
4- DELETED.					
5- SIGNAL ROUT TO DCS.					
6- IN CASE OF LOW LEVEL, THE OIL HEATER TO BE TRIPPED.					
7- MAINTAIN TEMPERATURE FOR ELECTRICAL INSULATIONS IS 30°C.					
LEGEND:					
<div><div>VENDOR</div><div><div></div></div><div>CUSTOMER</div></div>					
HOLDE:					
EQUIPMENT LIST:					
KEY PLAN :					
02	OCT-2024	ISSUED FOR APPROVAL (IFA)	A.K	F.SH	A.M
01	AUG-2024	ISSUED FOR APPROVAL (IFA)	A.K	F.SH	A.M
00	JUL-2024	ISSUED FOR APPROVAL (IFA)	A.K	F.SH	A.M
REV.	ISSUE DATE	DESCRIPTION	PREPARED	CHECKED	APPROVED
CLIENT					
CONSULTING ENGINEER					
PROJECT:					
DRAWING TITLE:					
PROCESS & INSTRUMENTATION DIAGRAM (P&ID)-RU					
DRAWING NO.	REV.	SIZE	SCALE	SHEET	
EI027-HSE-VD-PR-PID-002	02	A3	NTC	3 of 7	

TAG NO.	RU0001A-E-01
SERVICE	OIL COOLER
DESIGN PRESS. (BARG)	S: 30, T:30
DESIGN TEMP. (°C)	S:5/100, T:-45/100
DESIGN DUTY (kW)	24.7
ID x L (mm)	139.7 x 2200
TYPE	AEH

TAG NO.	RU0001A-P-01
SERVICE	OIL PUMP
TYPE	SCREW PUMP
DESIGN PRESS. (BARG)	26
DESIGN TEMP. (°C)	5 / 100
RATED POWER (kW)	2.5

TAG NO.	RU0001A-F-01A/S
SERVICE	OIL FILTER
DESIGN PRESS. (BARG)	23
DESIGN TEMP. (°C)	5/100
ID x L (mm)	MAYEKAWA

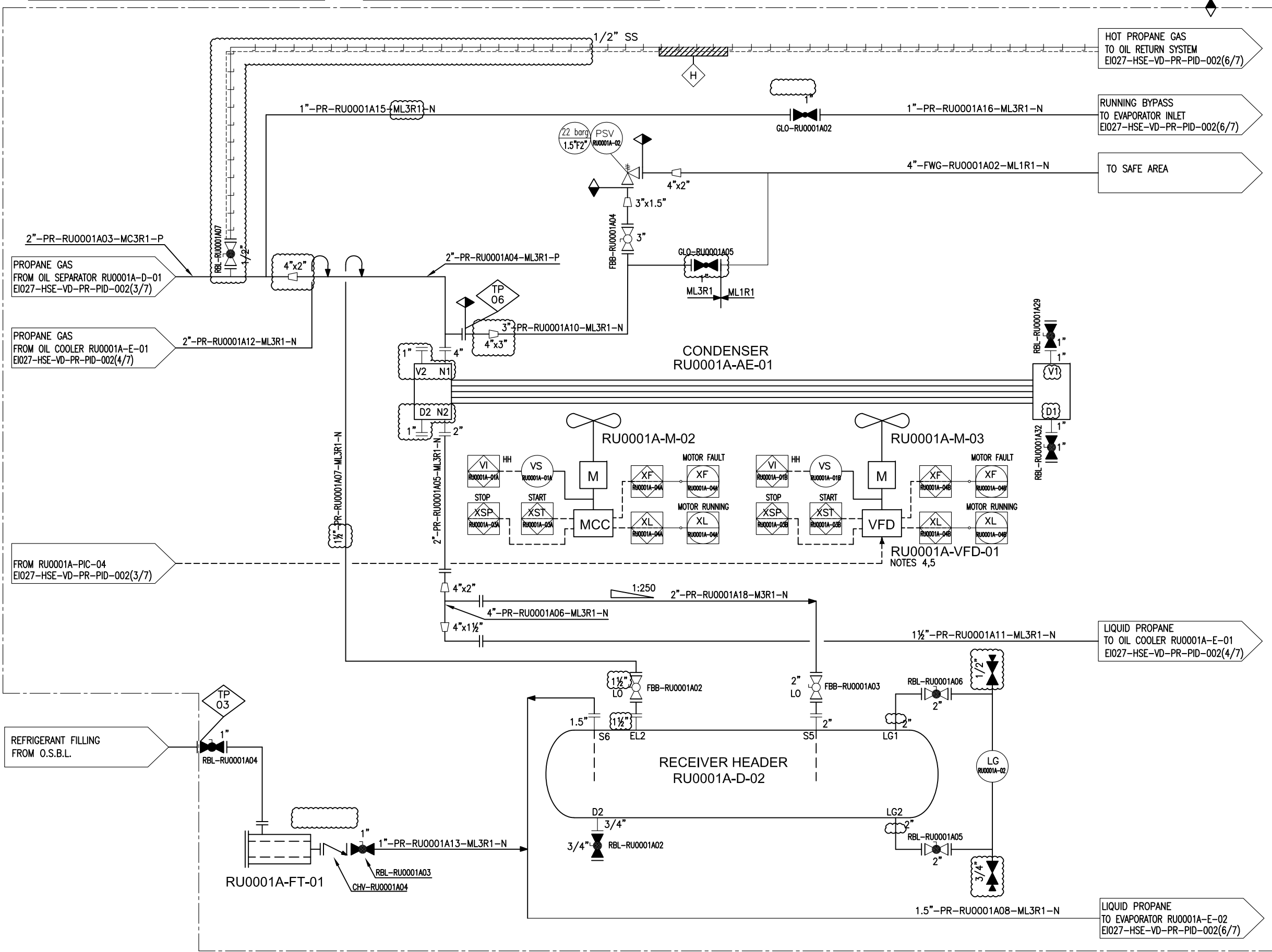
14	15	16			
REFERENCE DRAWING	DWG NO.	REV.			
NOTES :					
1- ONE OPERATING / ONE STAND-BY.					
2- DP=3 BAR.					
3- SIGNAL ROUT TO DCS.					
4- HEAT TRACING TO BE TURNED OFF DURING COMPRESSOR START.					
5- MAINTAIN TEMPERATURE FOR ELECTRICAL INSULATIONS IS 30°C.					
LEGEND:					
<div>VENDOR<div><div></div><div></div></div>CUSTOMER</div>					
HOLDE:					
EQUIPMENT LIST:					
KEY PLAN :					
02	OCT-2024	ISSUED FOR APPROVAL (IFA)	A.K	F.SH	A.M
01	AUG-2024	ISSUED FOR APPROVAL (IFA)	A.K	F.SH	A.M
00	JUL-2024	ISSUED FOR APPROVAL (IFA)	A.K	F.SH	A.M
REV.	ISSUE DATE	DESCRIPTION	PREPARED	CHECKED	APPROVED
CLIENT					
CONSULTING ENGINEER					
PROJECT:					
DRAWING TITLE:					
PROCESS & INSTRUMENTATION DIAGRAM (P&ID)-RU					
DRAWING NO.		REV.	SIZE	SCALE	SHEET
EI027-HSE-VD-PR-PID-002		02	A3	NTC	4 of 7

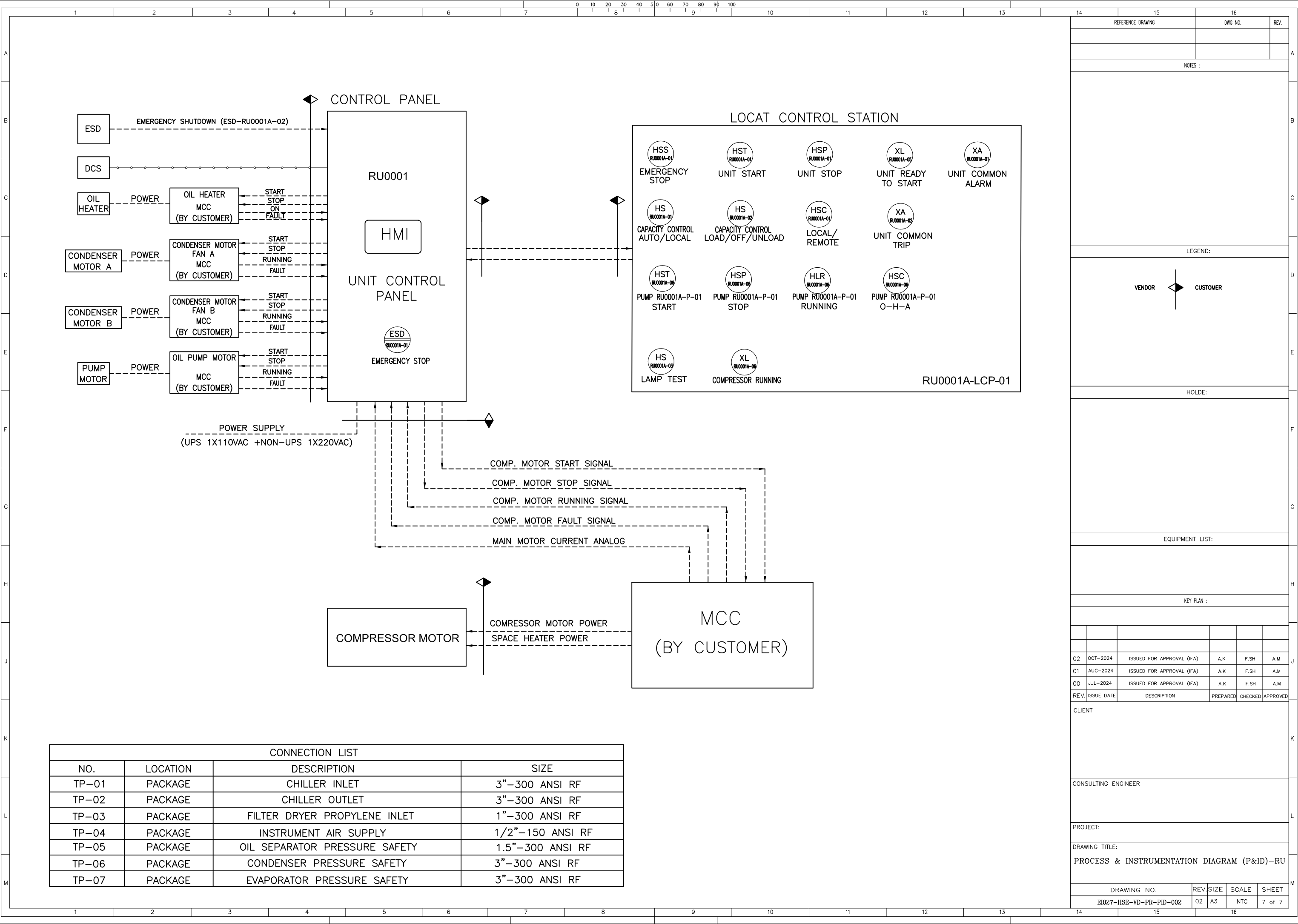


TAG NO.	RU0001A-AE-01
SERVICE	CONDENSER
DESIGN PRESS. (BARG)	22.0+FV
DESIGN TEMP. (°C)	-45/120
DESIGN DUTY (kW)	257

TAG NO.	RU0001A-D-02
SERVICE	RECEIVER HEADER
DESIGN PRESS. (BARG)	22.0+FV
DESIGN TEMP. (°C)	-45/120
ID x L (mm)	437 x 4000

REFERENCE DRAWING		DWG NO.	REV.
NOTES :			
1- DELETED.			
2- MANUAL FAN PITCH HAS BEEN CONSIDERED FOR EACH FAN.			
3- MAINTAIN TEMPERATURE FOR ELECTRICAL INSULATIONS IS 30°C.			
4- VARIABLE FREQUENCY DRIVE IS INSTALLED IN MOTOR CONTROL CENTER.			
5- MOTOR HARDWIRE CONNECTED TO VARIABLE FREQUENCY DRIVE.			
LEGEND:			
VENDOR CUSTOMER			
HOLDE:			
EQUIPMENT LIST:			
KEY PLAN :			
02	OCT-2024	ISSUED FOR APPROVAL (IFA)	A.K F.SH A.M
01	AUG-2024	ISSUED FOR APPROVAL (IFA)	A.K F.SH A.M
00	JUL-2024	ISSUED FOR APPROVAL (IFA)	A.K F.SH A.M
REV.	ISSUE DATE	DESCRIPTION	PREPARED CHECKED APPROVED
CLIENT			
CONSULTING ENGINEER			
PROJECT:			
DRAWING TITLE:			
PROCESS & INSTRUMENTATION DIAGRAM (P&ID)-RU			
DRAWING NO.	REV.	SIZE	SCALE SHEET
EI027-HSE-VD-PR-PID-002	02	A3	NTC 5 of 7





CONNECTION LIST			
NO.	LOCATION	DESCRIPTION	SIZE
TP-01	PACKAGE	CHILLER INLET	3"–300 ANSI RF
TP-02	PACKAGE	CHILLER OUTLET	3"–300 ANSI RF
TP-03	PACKAGE	FILTER DRYER PROPYLENE INLET	1"–300 ANSI RF
TP-04	PACKAGE	INSTRUMENT AIR SUPPLY	1/2"–150 ANSI RF
TP-05	PACKAGE	OIL SEPARATOR PRESSURE SAFETY	1.5"–300 ANSI RF
TP-06	PACKAGE	CONDENSER PRESSURE SAFETY	3"–300 ANSI RF
TP-07	PACKAGE	EVAPORATOR PRESSURE SAFETY	3"–300 ANSI RF

REFERENCE DRAWING		DWG NO.	REV.
NOTES :			
LEGEND:			
<div><div>VENDOR</div><div>CUSTOMER</div></div>			
HOLDE:			
EQUIPMENT LIST:			
KEY PLAN :			
02	OCT-2024	ISSUED FOR APPROVAL (IFA)	A.K F.SH A.M
01	AUG-2024	ISSUED FOR APPROVAL (IFA)	A.K F.SH A.M
00	JUL-2024	ISSUED FOR APPROVAL (IFA)	A.K F.SH A.M
REV.	ISSUE DATE	DESCRIPTION	PREPARED CHECKED APPROVED
CLIENT			
CONSULTING ENGINEER			
PROJECT:			
DRAWING TITLE:			
PROCESS & INSTRUMENTATION DIAGRAM (P&ID)–RU			
DRAWING NO.		REV.	SIZE
EI027–HSE–VD–PR–PID–002		02	A3
		SCALE	SHEET
		NTC	7 of 7